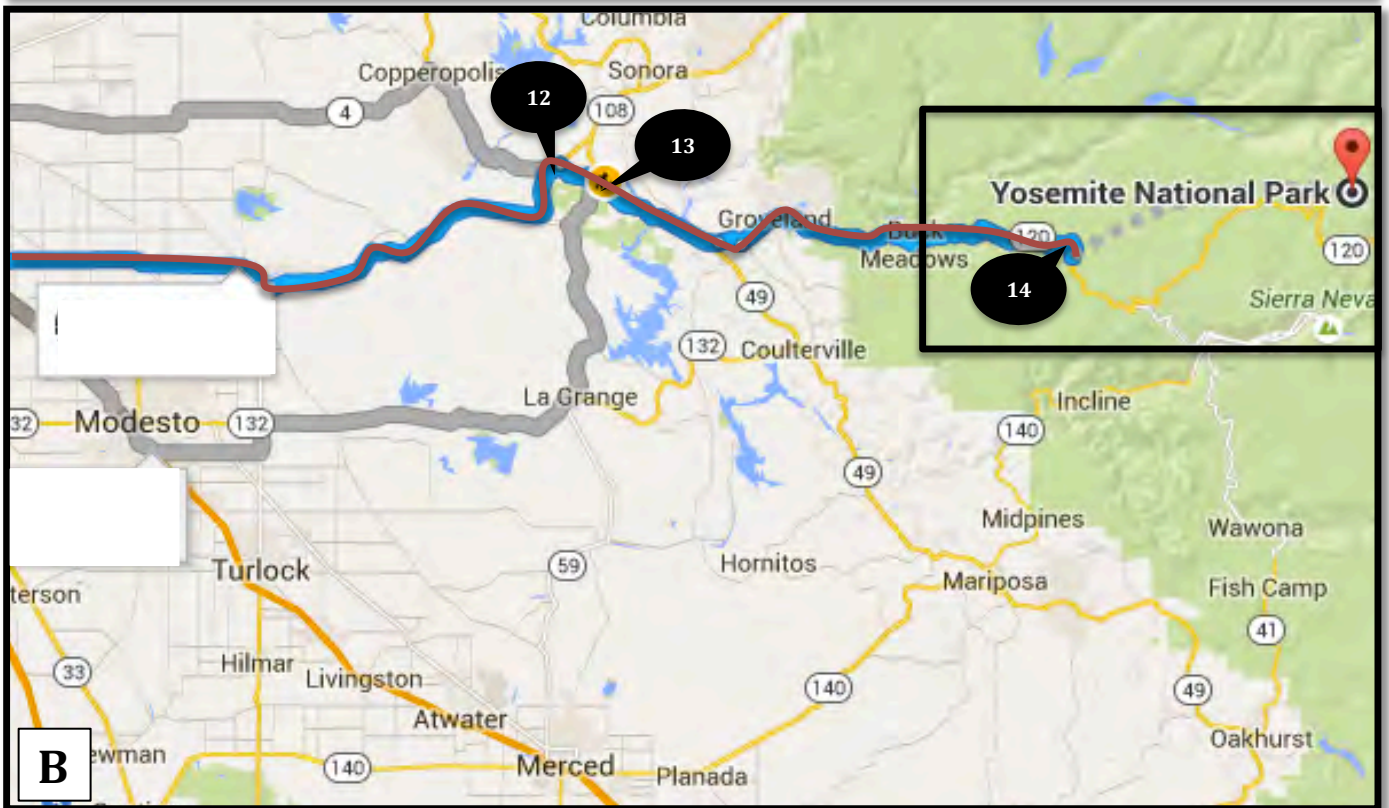
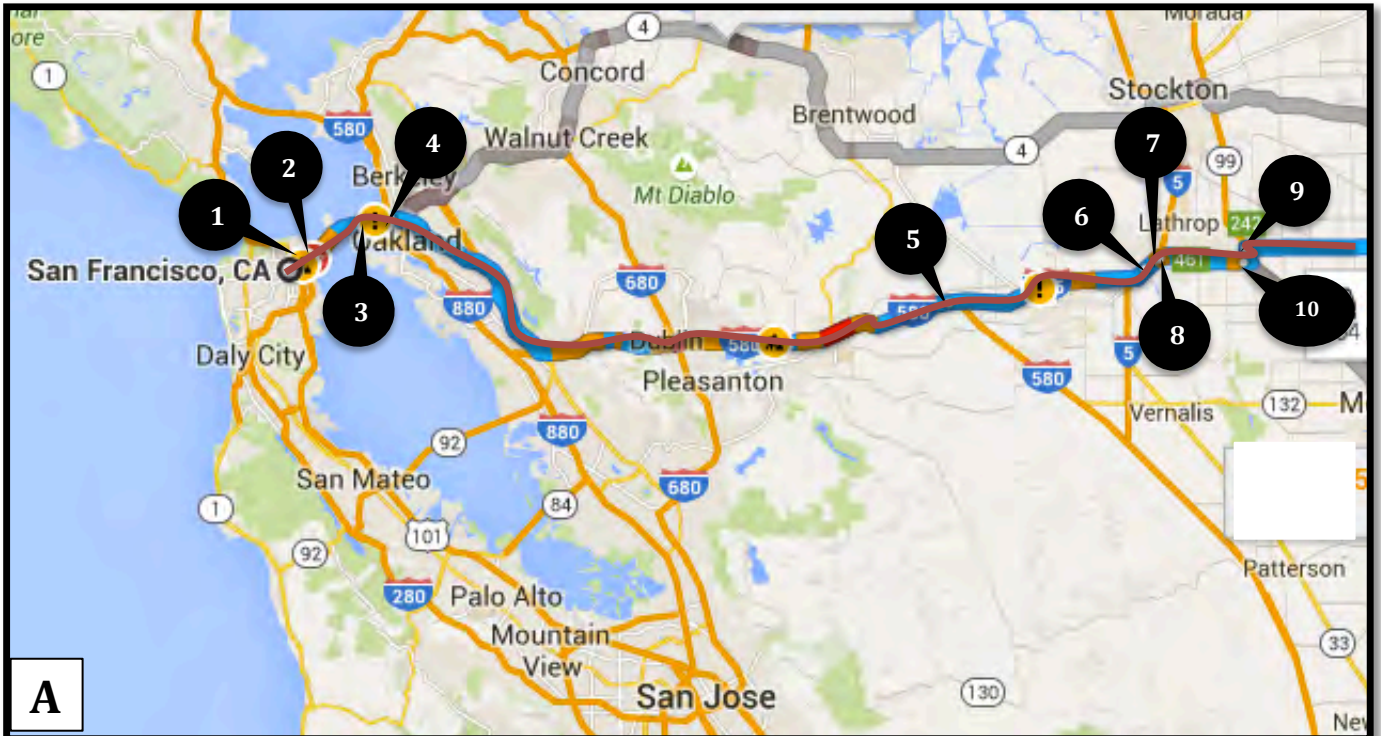
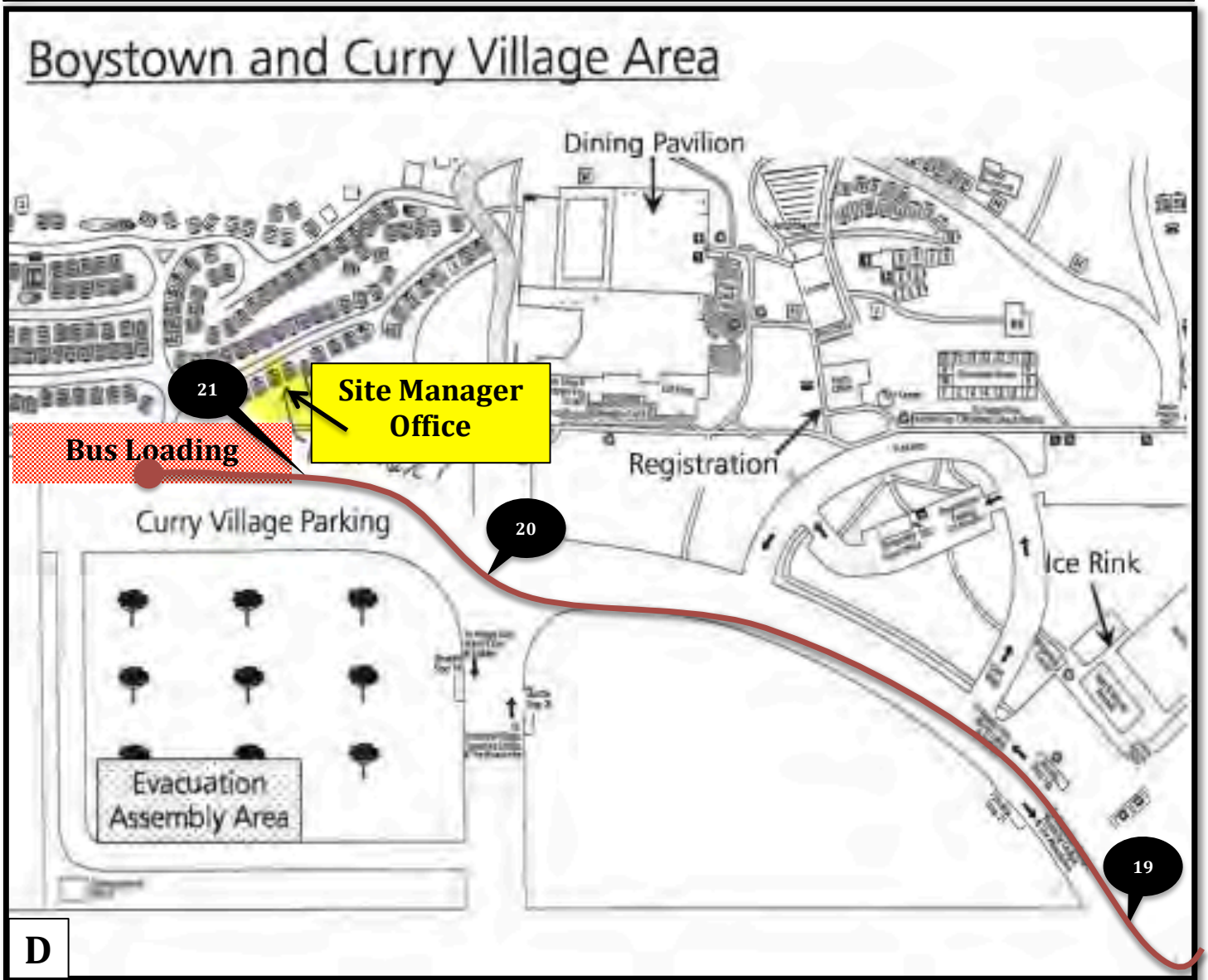
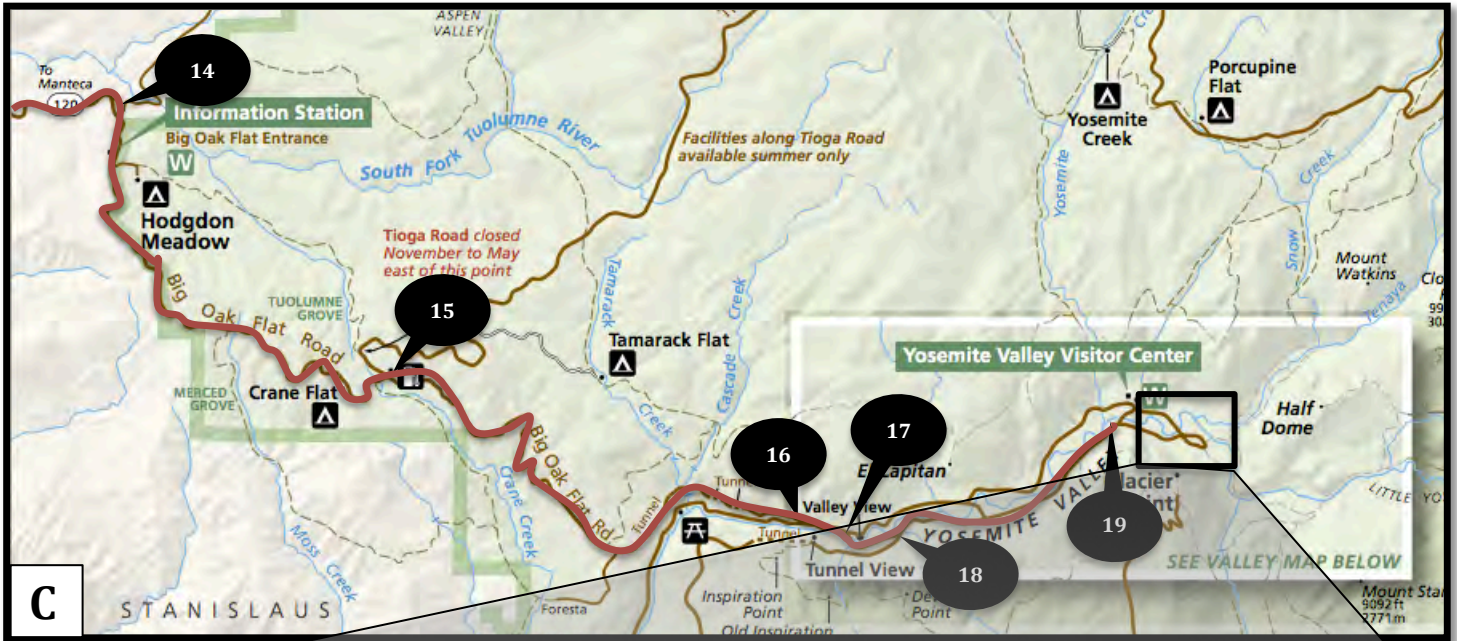




Directions to NatureBridge in Yosemite National Park from the San Francisco/Bay Area (Curry Village)

(Numbers on maps correspond to the written directions below)





OVERVIEW:

Distance: 195 mi / 314 km

Time: 4-5 hours

Take I-580 east to I-205 east to Highway 120 east (Manteca – See directions below) or Highway 140 east (Merced) into Yosemite National Park.

Take I-580 E and I-205 E to CA-120 E to Yosemite National Park and follow signs for Yosemite Valley and Curry Village.

DETAILED DIRECTIONS): from the San Francisco/Bay Area to Curry Village in Yosemite National Park. (Each step below corresponds to a number on the maps above starting with Map A.)

1. From San Francisco, take the I-80 East ramp to Bay Bridge/Oakland
2. Merge onto I-80 E for 5 miles
3. Take the I-580 E exit toward CA-24/Hayward/Stockton
4. Continue onto I-580 E for 45 miles
5. Keep left to continue on I-205 E for 14.5 miles and follow signs for I-205/Tracy/Stockton
6. Merge onto I-5 N for 1 mile
7. Take Exit 461 for CA-120 toward Manteca/Sonora
8. Continue onto CA-120 E for 6 miles
9. Merge onto CA-120/CA-99 N toward Sacramento/Sonora N
10. Take exit 242 for CA-120 E/ Yosemite Ave toward Sonora and follow CA-120 E for 20 miles
11. Turn left onto CA-108 E/CA120E/E F St and follow CA-108 E/CA-120 E for 25 miles
12. Turn right onto CA-120 E and continue for 3.4 miles
13. Slight right onto CA-120 E/Montezuma Road and continue for 40.7 miles
14. After entering Yosemite National Park at the Big Oak Flat Entrance Station, drive 8 miles
15. Continue straight at the Crane Flat Service Station on Big Oak Flat Road towards Yosemite Valley.
16. Turn left onto El Portal Road (signs for Yosemite Valley/CA-41/Fresno)
17. Keep right at the split where there highway turns into a one-way road
18. Slight left at CA-41 S
19. Continue straight onto Southside Drive at the first stop sign
20. Turn right onto Curry Village Drive
21. Slight right to the Curry Village Parking area. The NatureBridge Site Manager office is located on the south side of the parking lot. Continue straight past the site manager office to the bus loading zone.

For more information or assistance, please call (209) 379 - 9511